

SOLSTICE & CLT Conference 2018

Developing the scholarship of teaching and learning (SOTL) at an institutional level

Dr Duncan Cross
University of Bolton

Claire Moscrop
Edge Hill University

**Edge Hill
University**



7th & 8th June 2018

Session Overview

- Scholarship of Teaching and Learning (SOTL)
- SOTLVision!
- Workshop tasks to share experiences
- Sharing results

Scholarship of Teaching and Learning (SOTL)

The Scholarship of Teaching and Learning (SoTL) is an emerging movement of scholarly thought and action that draws on the reciprocal relationship between teaching and learning at the post-secondary level (Boyer, 1990)

Key Characteristics of the Scholarship of Teaching and Learning



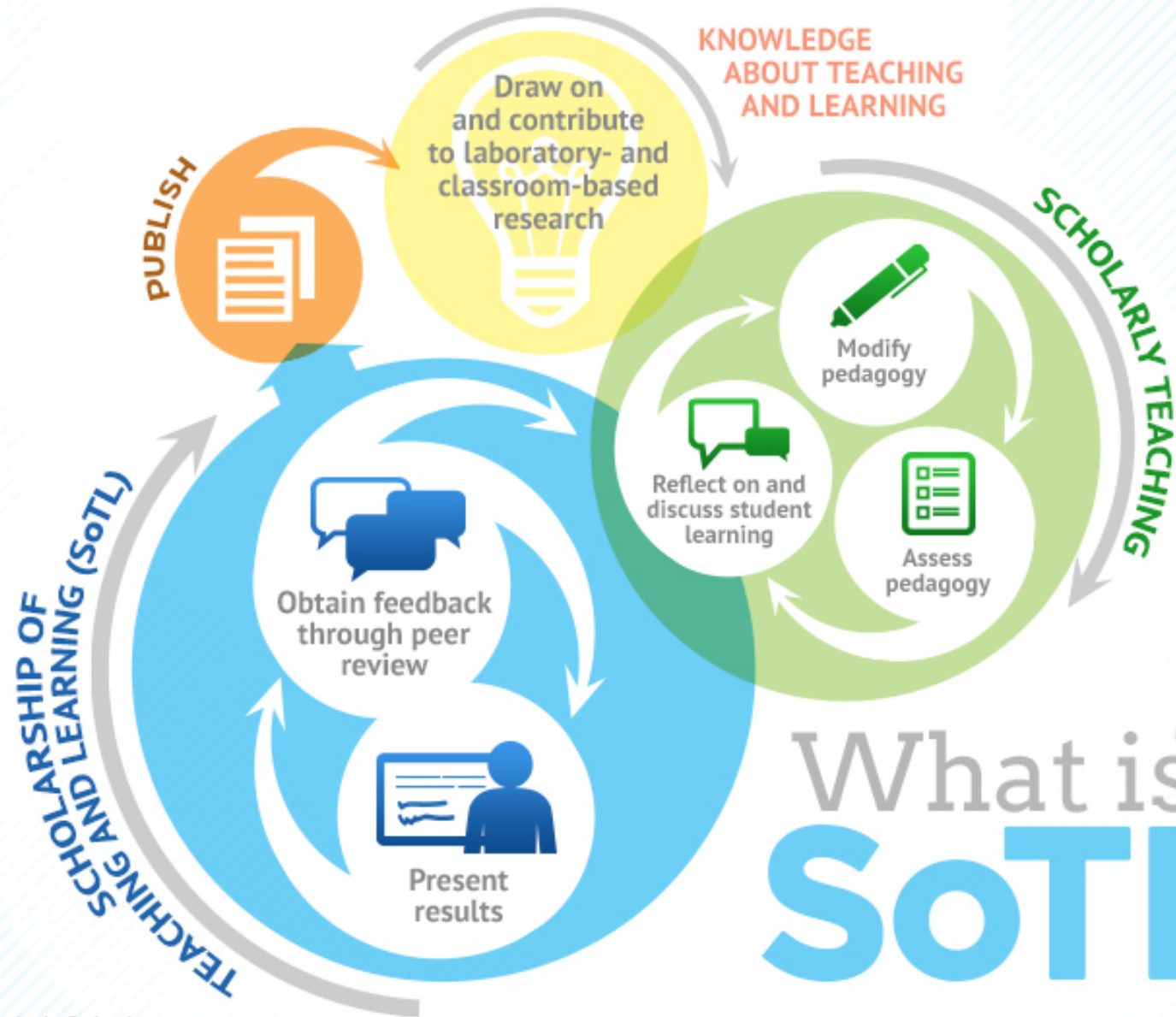
<https://www.youtube.com/watch?v=yvDKHHyx7YY>

Principles of SOTL

"For the Scholarship of Teaching and Learning (SoTL) to be understood as significant intellectual work in the academy, SoTL practitioners need to identify shared principles of good practice.

- (1) inquiry into student learning,
- (2) grounded in context,
- (3) methodologically sound,
- (4) conducted in partnership with students, and
- (5) appropriately public.

Taken together, these five principles can be guideposts for developing and refining individual SoTL inquiries and larger SoTL initiatives..... Even more importantly, these principles articulate a vision of a scholarship that enhances, perhaps even transforms, teaching and learning in higher education." Felten (2013)



What is
SoTL?

ISSOTL 2017
Calgary



Presenting and
Trialling at ISSOTL
2018 (Norway)

Social/ Fun
side of
conferences

*The Scholarship of Teaching & Learning
Co-creating a Teaching and Learning Vision*

Piloted in Jan 2018
(Bolton and UEL)

Evaluating now



Workshop

Task 1: 10 Minutes

Consider the **Barriers** and **Enablers** of SOTL at your institutions. Discuss on your tables and write individual barriers on XXX (colour?) post-its and individual enablers on XXX post-its.

Stick your post it notes on the corresponding sheet -
Discussion later

Workshop

Task 2: 5 Minutes

What is the impact (if any) of REF and then TEF on SOTL?
Generally? In your institution?

Please can we have a volunteer scribe on each table? 😊

Be ready to share

Workshop

Task 3: 15 Minutes

How do we drive change to break down the barriers identified and create/build enablers?

In your opinion, what would the ideal SOTL set up look like in an institution?

Discuss on Tables: Somebody scribe, share results!

As if by magic!... Themed barriers and enablers

Barriers

Enablers

Future Work

- Sharing of today's findings
 - More SOTL Vision
-
- Thank you for engaging in our workshop! Any questions?

References

Boyer, E. (1990). *Scholarship reconsidered: Priorities of the professoriate*. Princeton, NJ: Carnegie Foundation for the Advancement of Teaching.

Felten, P. (2013). Principles of Good Practice in SOTL. *Teaching and Learning Inquiry: The ISSOTL Journal* Vol.1, pp 121-125.

http://www.jstor.org/stable/10.2979/teachlearningqu.1.1.121?seq=1#page_scan_tab_contents