

Graduations

More than 3,500 students graduated this year and were joined by six public figures who were awarded honorary doctorates in recognition of their significant achievements that are aligned with the University's mission and values.

The 2024 recipients are:

Chris Kirkland, former professional goalkeeper, Liverpool FC player and mental health champion.



Dame Louise Ellman, former Leader of Lancashire County Council and former Member of Parliament for Liverpool Riverside.

The Right Honourable Lord Justice Holroyde, Court of Appeal judge and Vice President of the Criminal Division.



The Lord Shuttleworth (Charles) KG KCVO, who served as Lord Lieutenant of Lancashire until 2023, and Lady Ann Shuttleworth, who was High Sheriff of Lancashire in 1999.



Steve Igoe, former Deputy Vice-Chancellor of Edge Hill University who recently retired after 28 years service.



Prosperous communities

Our recent Ofsted inspection recognised the quality of our initial teacher education as 'outstanding' across all three age phases. The glowing report stated that "trainees at Edge Hill flourish" and "they exude the high levels of knowledge, skills and confidence necessary to embark successfully on their teaching careers".



New degree programmes in Engineering, Mathematics, Physics, Chemistry, Economics, Politics and Graphic Design, are in development to address skills shortages in the region and will support regional partners to grow the STEM workforce and help our communities flourish. This is in addition to our largest ever investment in student accommodation, alongside a new Students' Union and Life Sciences building as part of a huge £53m campus development.



The University's sector-leading SME Productivity and Innovation Centre (SME PIC) has launched a new training programme to develop the talents of business leaders in the Liverpool City Region, enabling them to improve business performance, productivity and resilience. Support is available to SMEs across the LCR until 31 March 2025.



Environmental impact

Our campus is recognised as one of the UK's best green spaces and was awarded Green Flag status for the 13th year running in 2024.



We have been ranked a 'Platinum Tier' university in the annual Uswitch Green Universities 2023 study of the sector's sustainability credentials. This rating recognises that we are leading the way in terms of green initiatives and renewable energy.



More than 140 people came together for the Second Lancashire Community Action Forum, reaffirming the University's commitment to work with community groups and key partners to help Lancashire advance its climate action efforts.

Cultural engagement

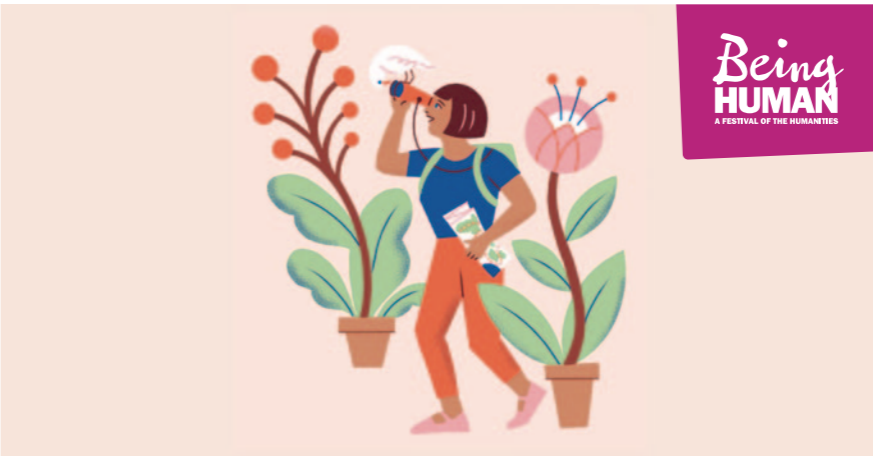


To support the creative industries, the University's Institute for Creative Enterprise delivered the British Film Institute academy for Liverpool, training young filmmakers. They also hosted a Skills for Jobs bootcamp on photography for the cultural industries for Liverpool City Region Authority. To date, films produced and contributed to by ICE short course learners have won numerous awards and been screened at 164 international film festivals.

The creative talents of young artists from across Merseyside were celebrated at a special awards ceremony organised by dot-art Schools art competition, a programme supported by the University. Through this partnership, Edge Hill has been able to champion the importance of arts education, creativity and children's mental wellbeing in 96 schools across the region.



The University was one of five flagship hubs selected for the 2023 Being Human national festival of the humanities. Funded by the British Academy, the Arts and Humanities Research Council, and the School of Advanced Studies, Edge Hill's academics delivered an inspiring programme that attracted hundreds of visitors to cultural activities exploring themes of migration and belonging, otherness, healthcare and nature.



Edge Hill University

2024

Annual Review

Welcome

Edge Hill University is known for making a difference by doing things differently, broadening access to knowledge on an outstanding campus that gives our students the space and opportunities to succeed.

Over the last 12 months this ethos has been demonstrated in many ways. We have been placed in the top four in the North West again in The Complete University Guide. The ranking builds on our recent successes, including being graded ‘outstanding’ by Ofsted for our entire teacher training provision, achieving Gold for Student Experience and several top accolades in recognition of our accommodation and facilities.

Improvements to the student experience are ongoing, including the largest ever investment in student accommodation opening in 2024 alongside a new Students’ Union and Life Sciences building as part of a huge £53m campus development.

Over the last year we have been celebrating 90 years at our award-winning Ormskirk campus and have welcomed thousands of visitors to help us mark the anniversary.

We have delivered the ambitions we set ourselves for 2023-24 against a backdrop of very challenging times for the entire Higher Education sector – and we won’t stop there.

We are committed to the continued development of a University that is built on shared values; that seeks to provide everything a student should expect; and a University that supports the communities it serves.

for us.

Dr John Cater
Vice-Chancellor



A YEAR IN REVIEW

Successes



Top four in the North West in the Complete University Guide 2025.



Gold for Student Experience, and silver overall in the Teaching Excellence Framework (TEF) run by the Office for Students.



1st in the UK for accommodation, voted for by students in the Uni Compare UK rankings 2025.



3rd in the UK for University Facilities in the Whatuni Student Choice Awards 2023.



95.6% of our students are employed or in further study within 15 months of graduating, according to Graduate Outcomes data released 2023.

Better health

A University-led mental health project for children and young people won £2.5m of funding - one of the largest research grants of its kind ever awarded nationally in the arts and arts therapies. The Arts4Us project, in collaboration with more than 50 partners, won the award from UK Research and Innovation. Arts4Us brings together under one digital platform the best practice in arts and arts therapies, making it easier for young people and their families to find the crucial help they need.



A mental health and wellbeing hub co-developed by Edge Hill’s researchers won an Educate North Award 2024 - one of the most prestigious awards in education. Our world-leading research underpins the vital services being offered at The People’s Place in Liverpool, run in partnership with EitC, Everton Football Club’s charitable arm.



Researchers at the University have received a major funding boost to help children diagnosed with cancer and their families “thrive and not just survive”. The North West Cancer Research Fund has awarded the team £122,864 to undertake a two-year research project to improve health information and support for children and young people diagnosed with cancer.



Social inclusion

New Government funding has been granted to create 33 extra medical school places over the next two years to train much-needed doctors at the University – which is one of the largest providers of healthcare education in the North West. This will help address the shortage of doctors in the region and will ensure the University can continue to play a key role in helping the NHS deliver its Long-Term Workforce Plan.

Anchor institutions in Wigan officially signed a landmark civic agreement with the Edge Hill, which will enhance the lives of those within the borough. Leaders from the University, Wigan Council, Wigan and Leigh College and Wrightington, Wigan and Leigh Teaching Hospitals NHS Foundation Trust came together for the official launch and declared Edge Hill as the flagship university of the borough of Wigan.



The University launched its new Access and Participation Plan in 2024, underpinned by a belief that all students, from all backgrounds should have access to the highest quality experience. Most of our students have at least one widening participation characteristic (77%) and we will continue to provide opportunities to help students overcome educational, economic and social disadvantages so they can thrive.



Edge Hill University

Edge Hill University, Ormskirk, L39 4QP
edgehill.ac.uk