

Tutoring, Advising and Coaching : One for all or all for one?

Ollie Jones
Business Cluster
Personal Tutor Coordinator
o.jones@leedsmet.ac.uk

Personal Tutor Scheme

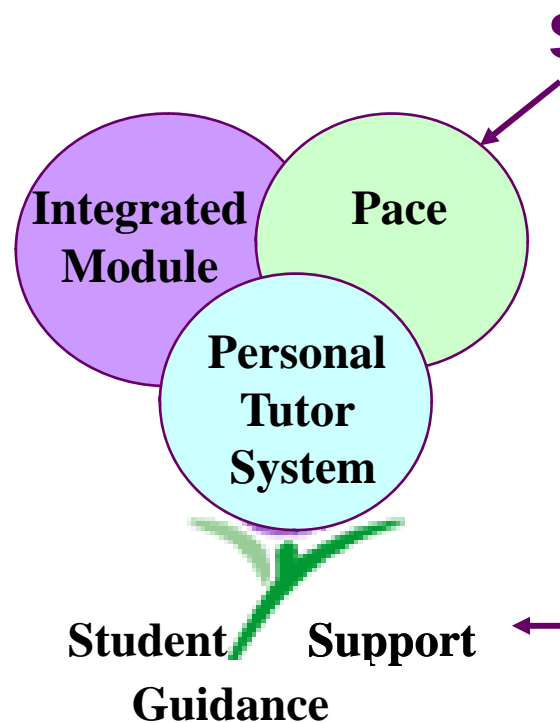


Context

- Faculty of Business & Law
- Grouped into Course *Clusters*
 - Eg Law, PR, **Business** & Accounting
- Business Cluster contains **5** courses
 - Usually approx **600** students per level (year)
- Potentially 70+ Personal tutors

Personal Tutor Scheme

Initial Underlying Principles

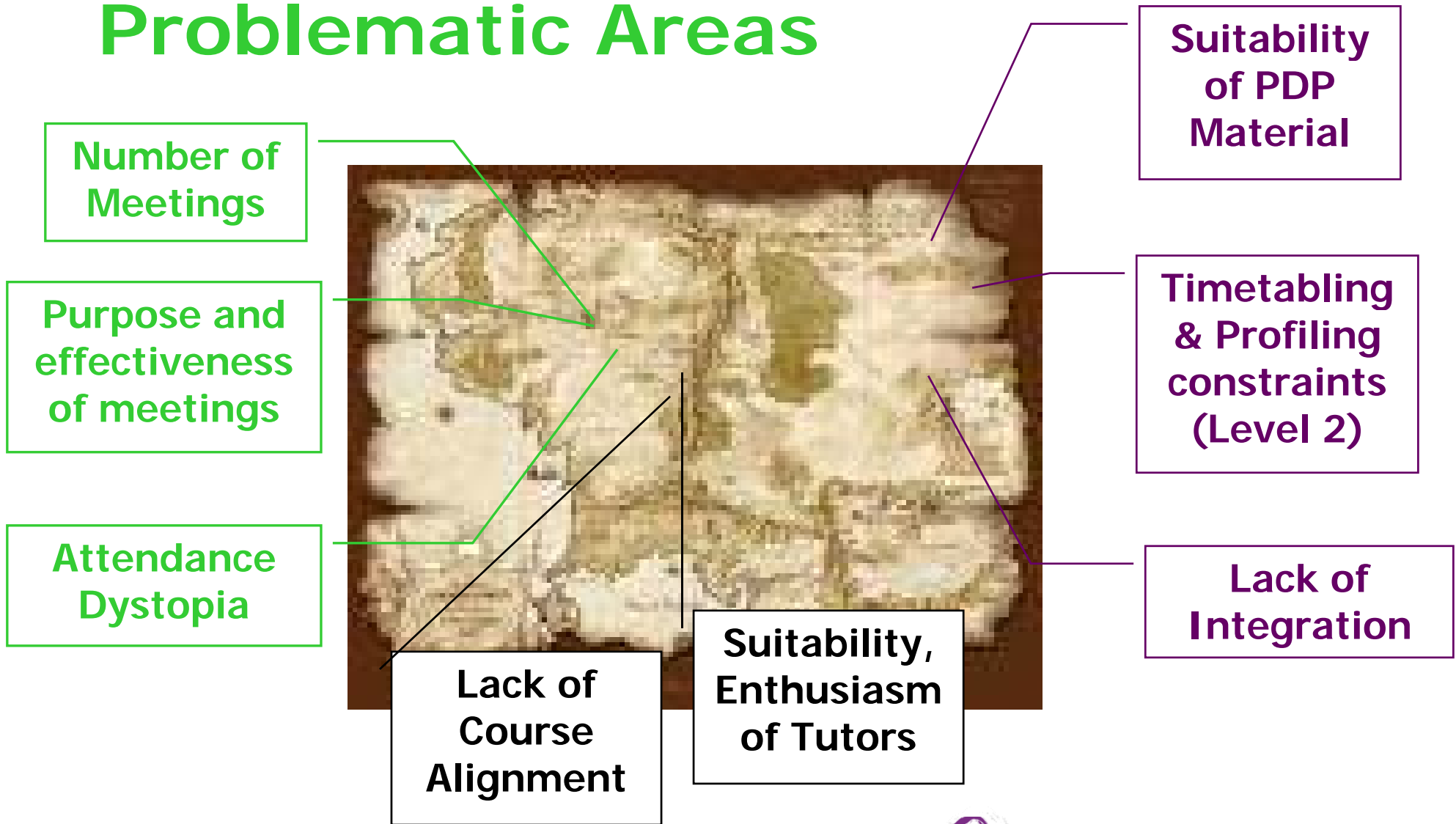


Skills (PDP) Module

- Personal tutor is students PACE tutor (24 students)
- PACE Module '*integrated*' with another core module
- System support provided by Administration team
- Student has **4** scheduled meetings per year with Personal Tutor

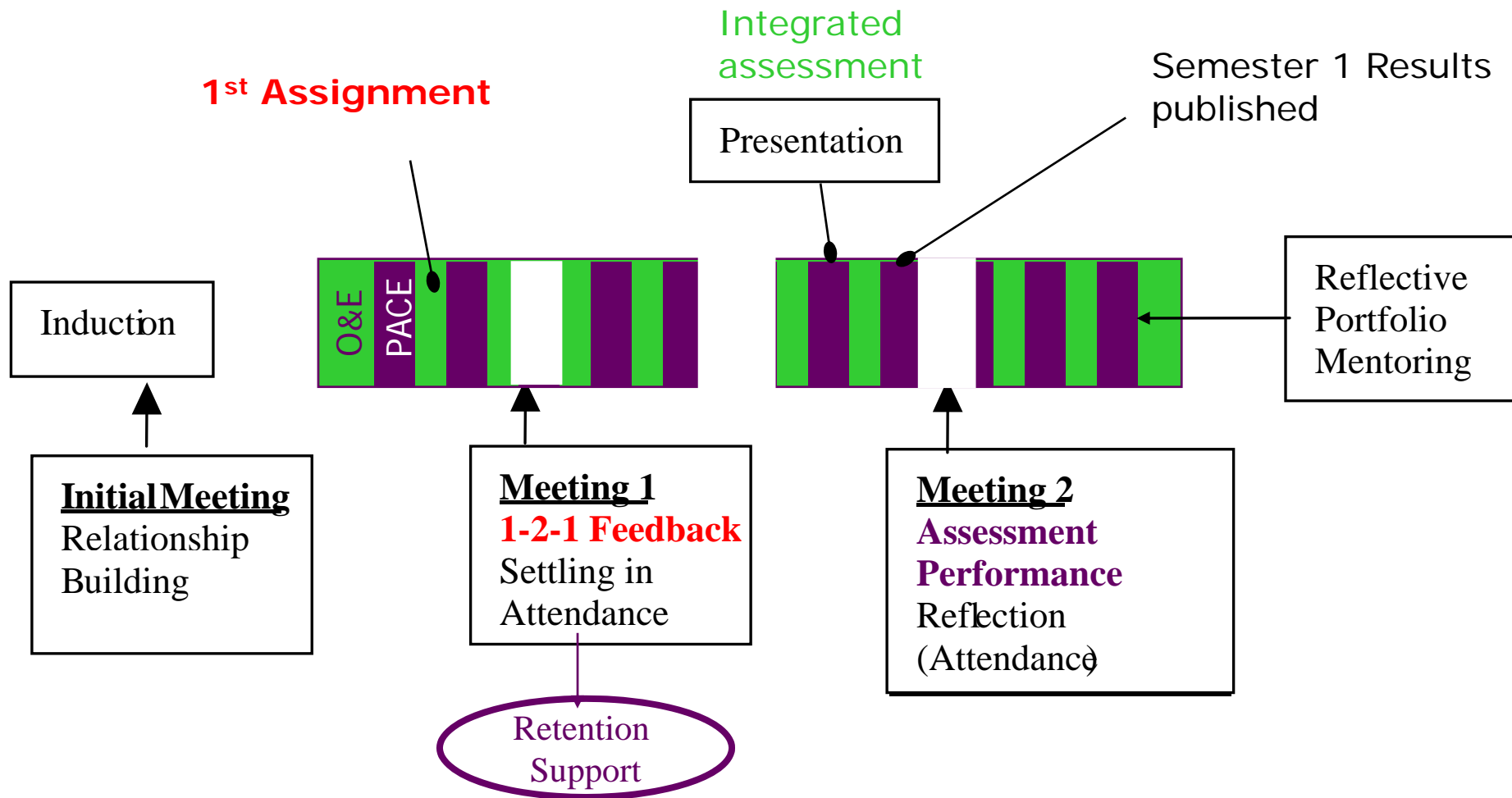
PACE : Personal And Career Effectives

Problematic Areas



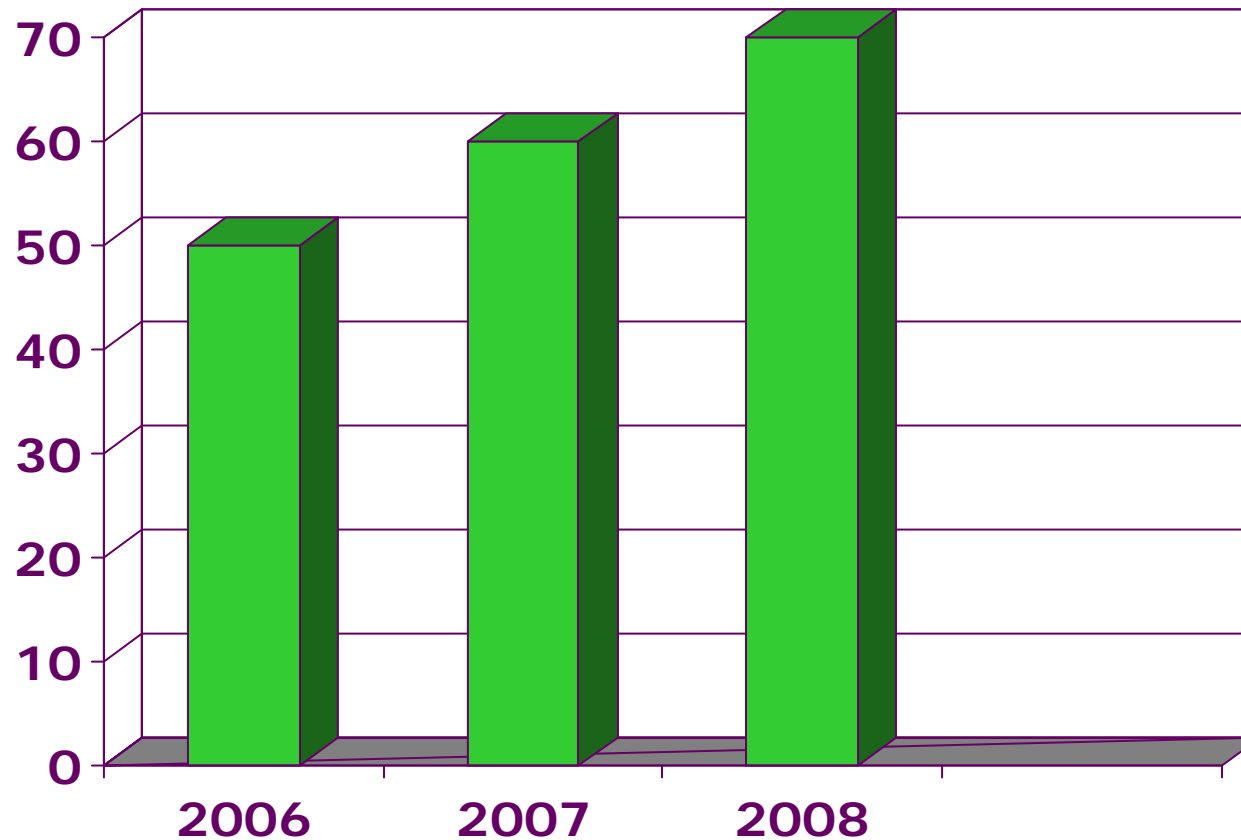
Personal Tutor Scheme

Schedule – Level 1



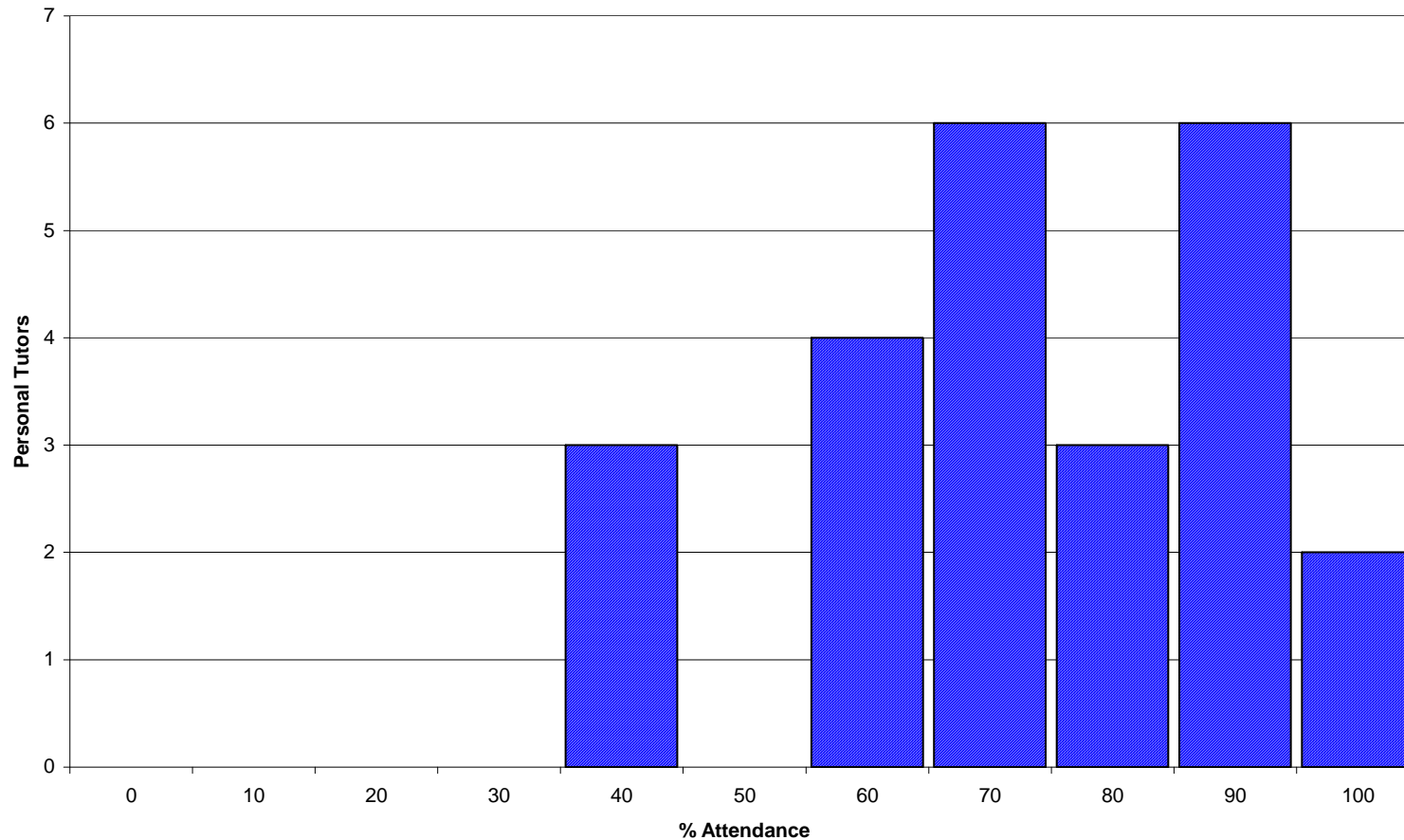
Personal Tutor Scheme

Meeting Attendance – Level 1



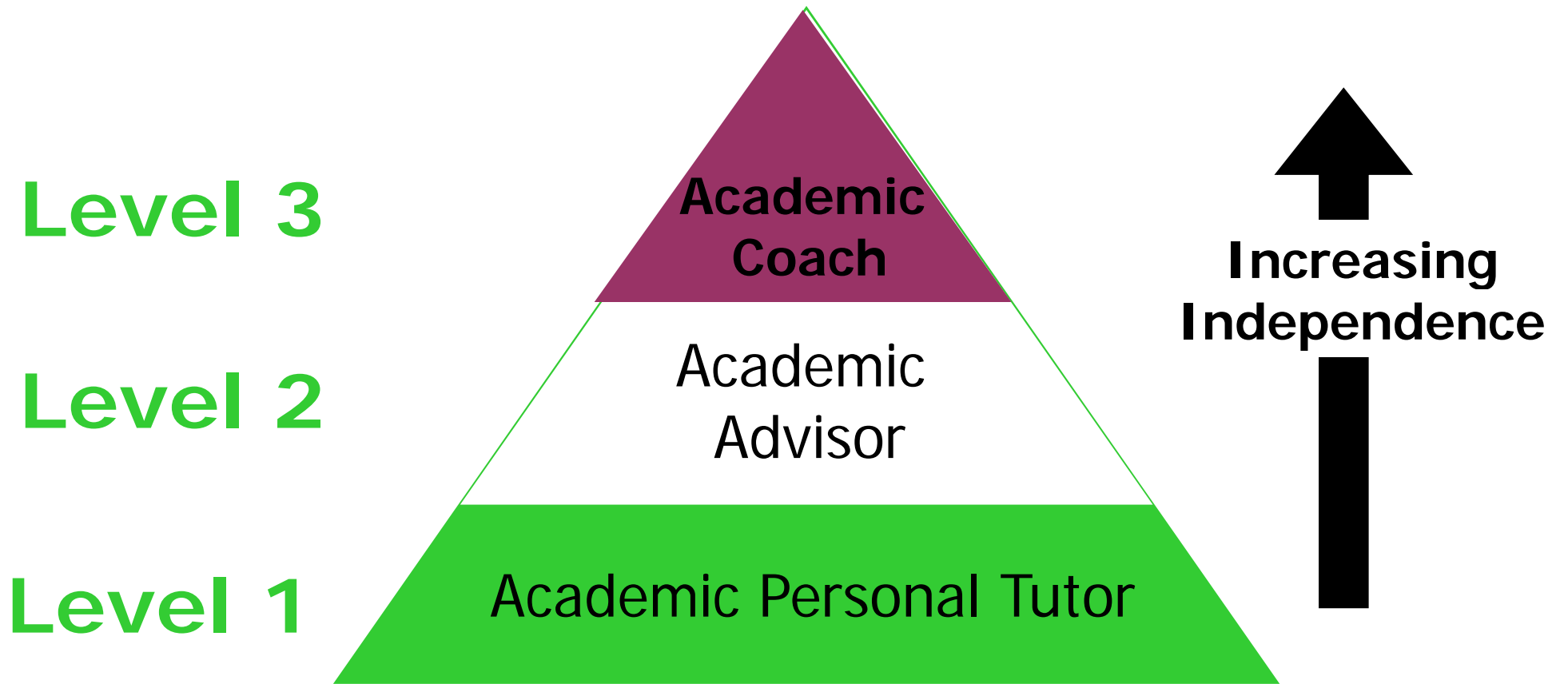
Personal Tutor Scheme

Variation in Attendance – by Tutor (group)

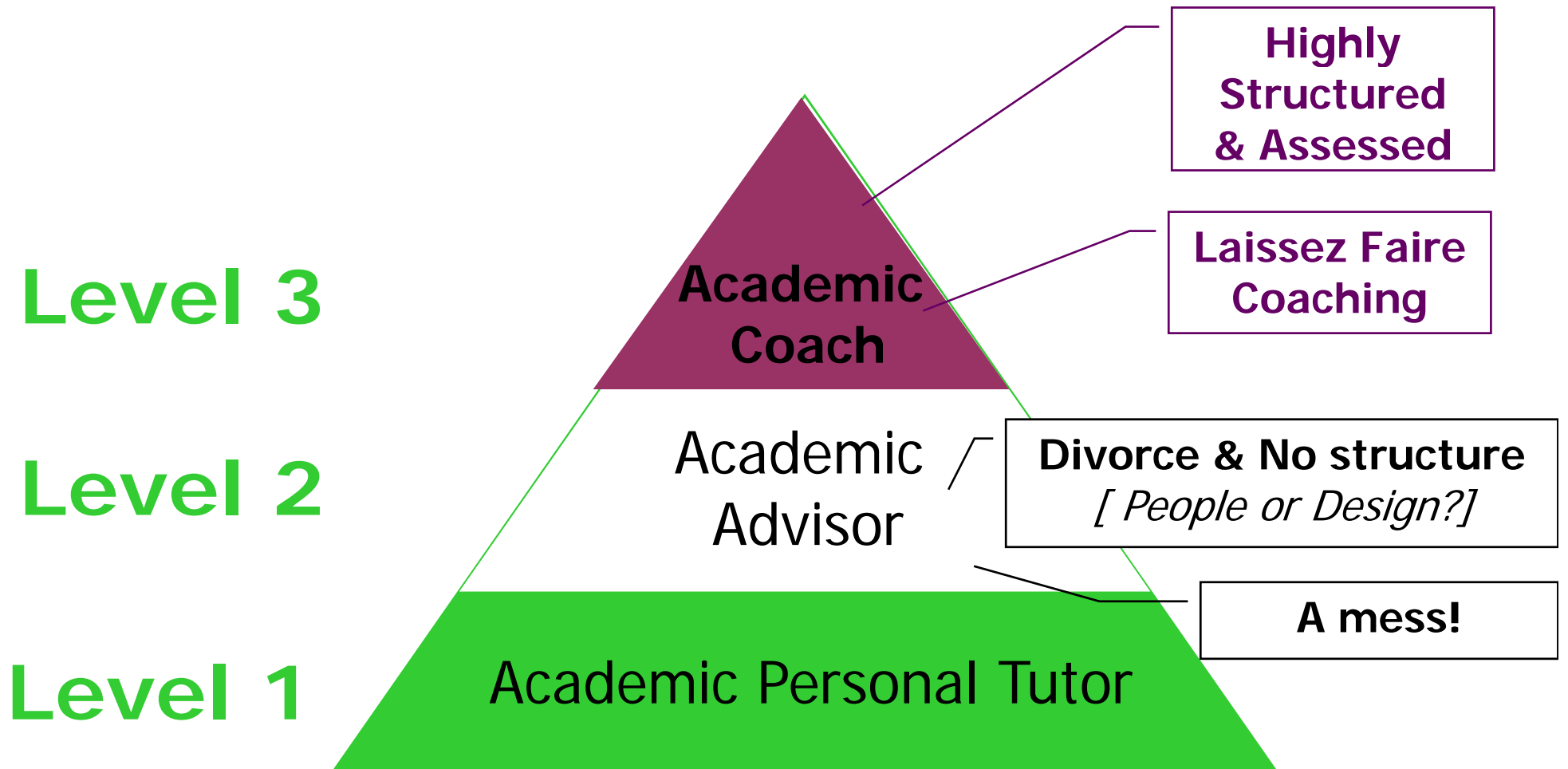


Personal Tutor Scheme





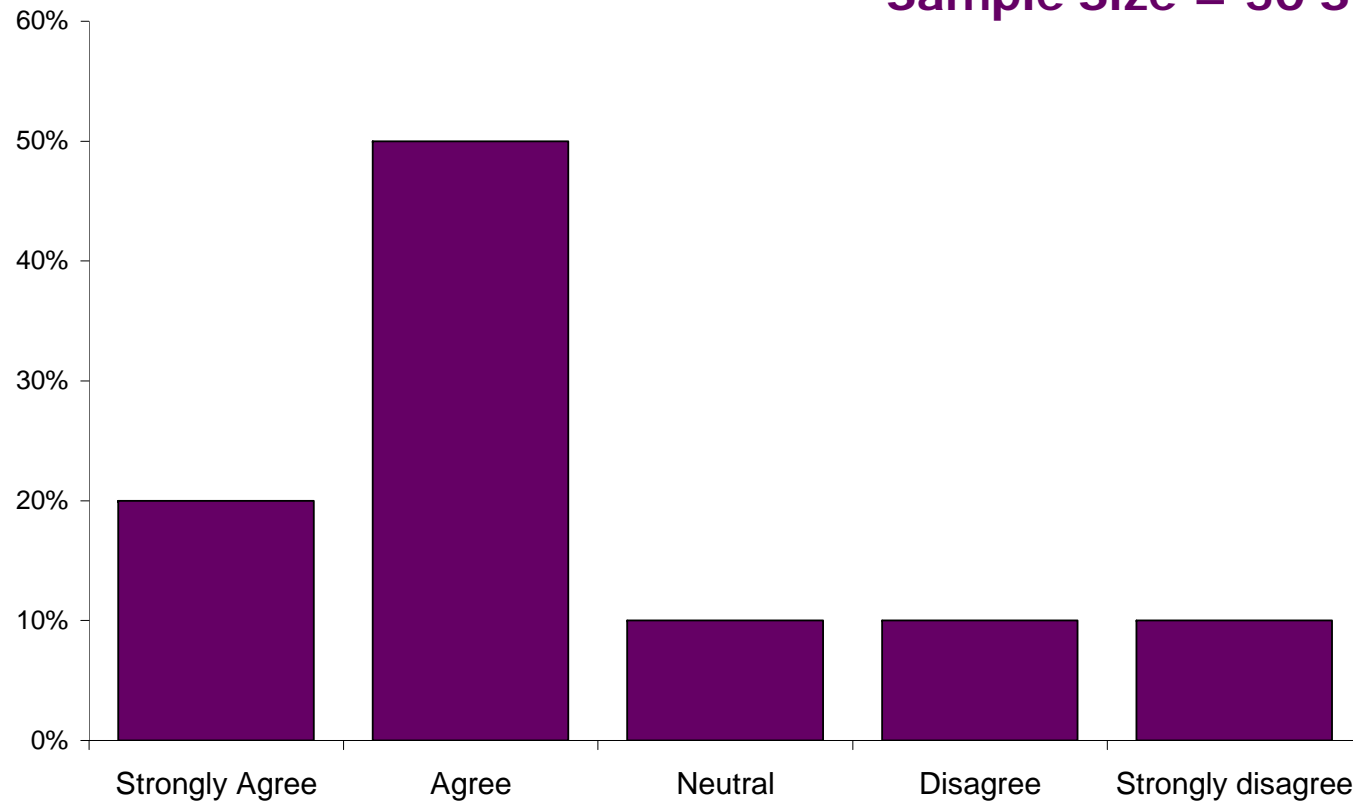
Personal Tutor Scheme



Personal Tutor Scheme

Overall Effectiveness

Sample Size = 50 Students



Personal Tutor Scheme



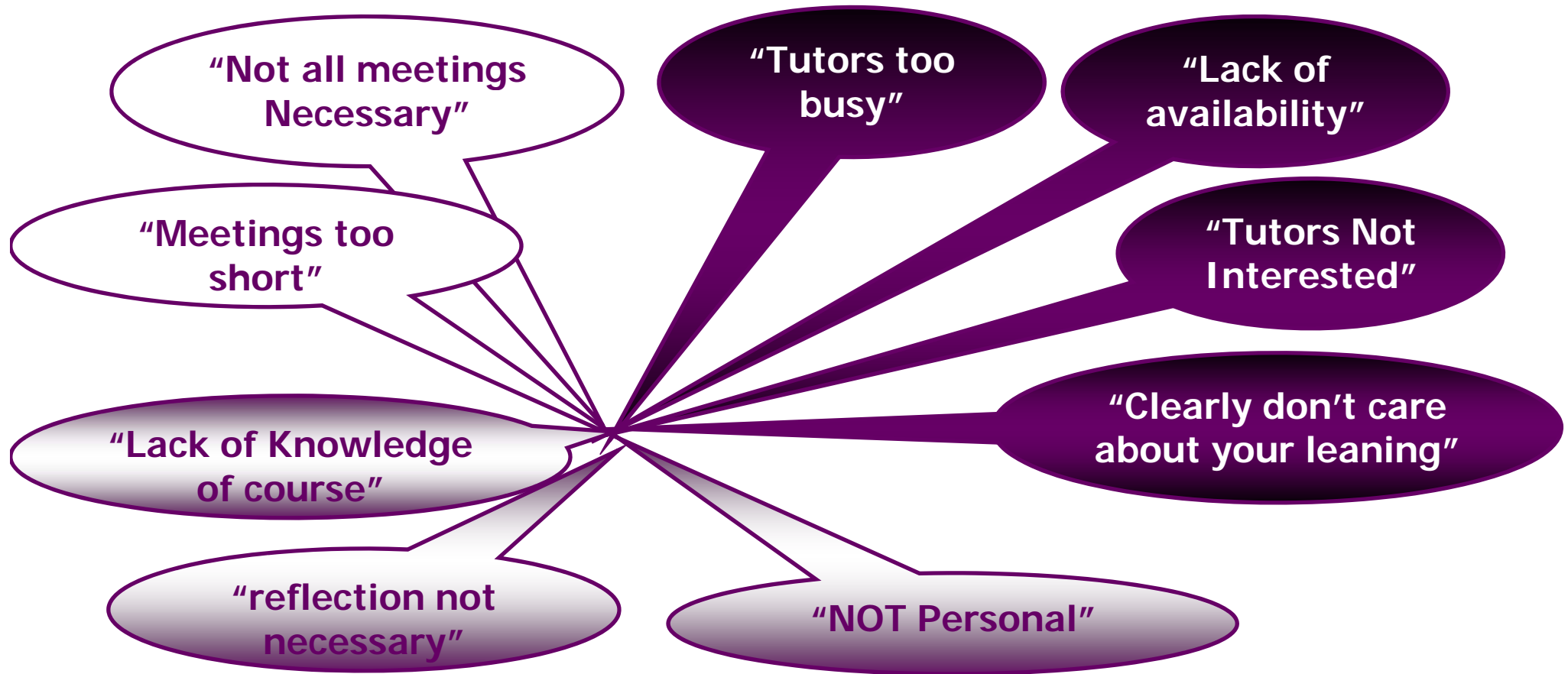
Achievement of Purpose

To establish and maintain personal contact with students	<p>"Allowed me to vent my feelings"</p> <p>"Receiving personal feedback"</p>
To provide academic guidance and counselling for students	<p>"Feedback from assignment"</p> <p>Helping with problems on other modules"</p> <p>Helped orientate in course structure</p>
To encourage the development of students as independent learners	<p>"Planning workload and setting direction"</p> <p>"Helped identify skills"</p>
To provide pastoral care in the academic sense as it affects the learning capabilities of students	<p>"Each meeting is productive and helpful"</p> <p>"Gain advice and support"</p>
To ensure students are aware of and have access to appropriate expert services where required.	<p>"Helped get advice with job seeking"</p>
To ensure that confidential help and support is made available to students	<p>"Anything I don't understand"</p>

Personal Tutor Scheme



Negative Comments



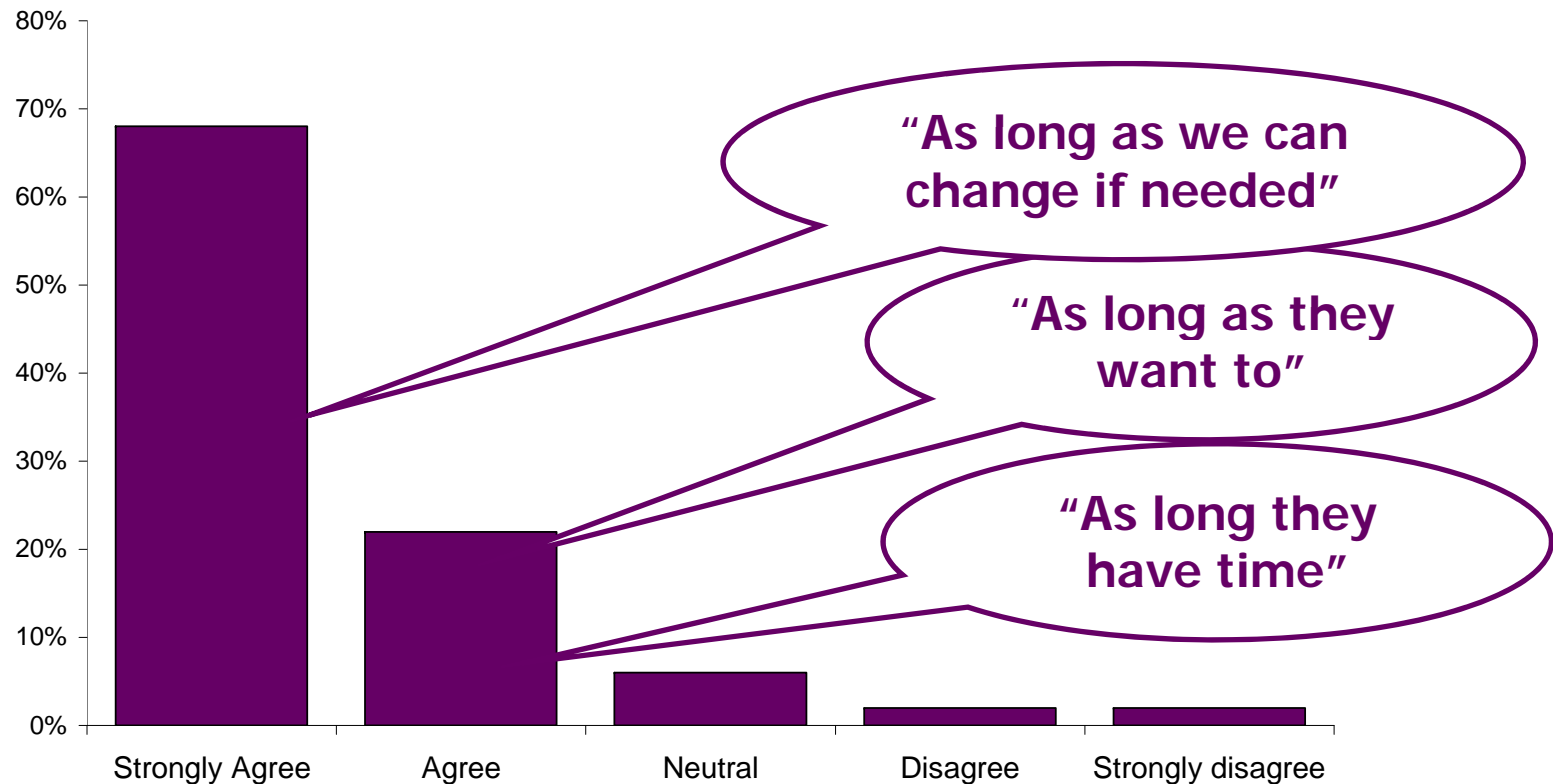
Personal Tutor Scheme



leeds metropolitan university

“More of a mentor – not a tutor”

Should we consider giving you the same Personal tutor during your three years at Leeds Met?



Personal Tutor Scheme

“I want to be treated as a student not a statistic”

Personal Tutor Scheme



Emergent Directions

More Personal
Coaching &
mentoring

Course Alignment
Required



Tutor Suitability

Cohort Size
problematic

Integration with PDP
Is a constraint

Personal Tutor Scheme



leeds metropolitan university

A Rose by any other name would smell as sweet....



- Divorced Virtual PACE 1 module
 - Retaining successful **PT** elements
 - No PACE tutors – focus on Personal tutors
- **Feasibility study on students retaining their PT**
 - Would Allow for more successful separation from modules at L2 and 3
- Holding Pattern
 - Level 2 introduce some structure
 - Level 3 **Divorce** from **one** integrated module, no assessment

Personal Tutor Scheme

