

“Achieving your Full Potential”

A Focussed Approach to Supporting a Diverse Student Population.

Gay Johnson

Barbara Howard Hunt

Personal Development Centre

Faculty of Health

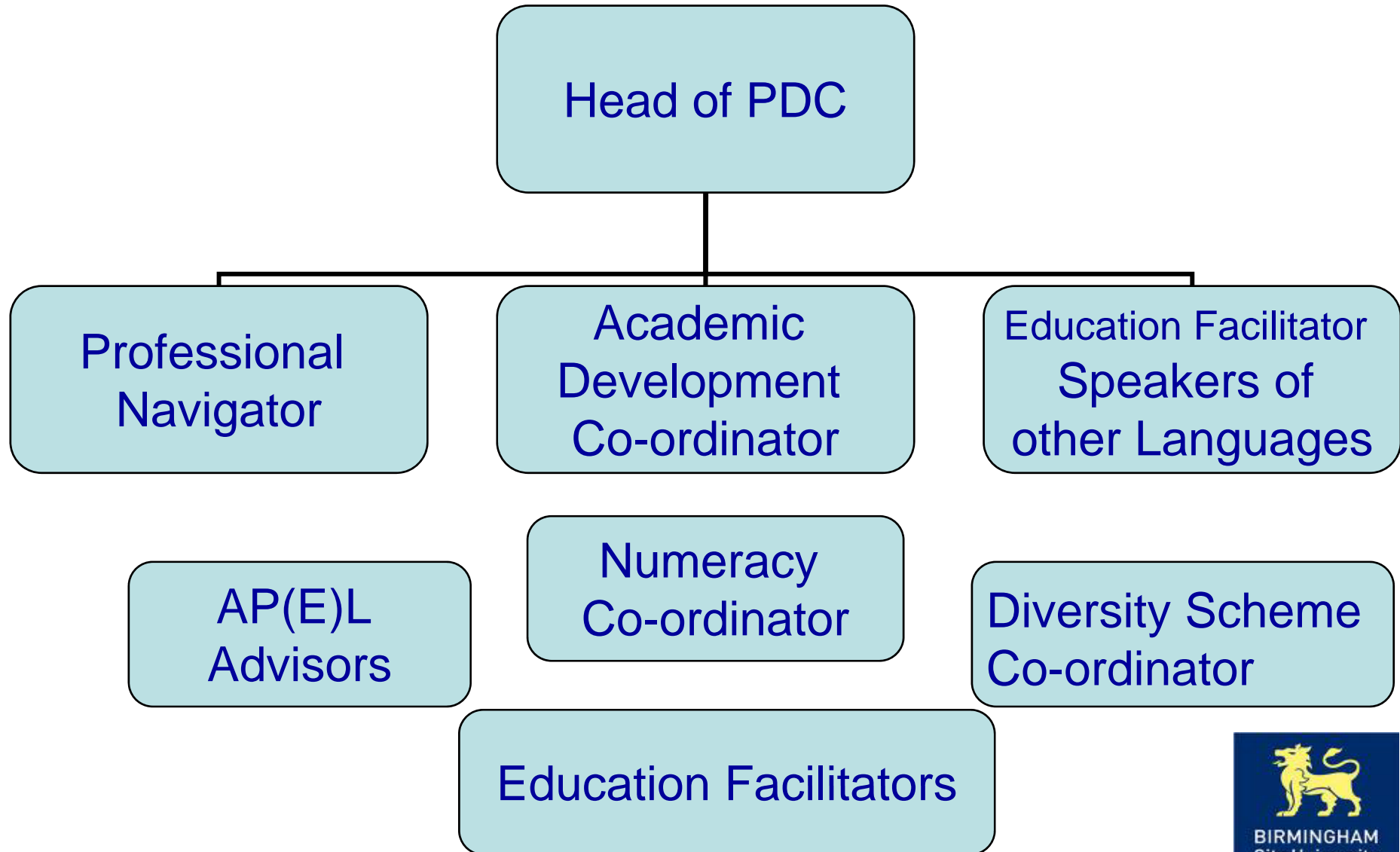


Personal Development Centre (PDC)

- Set up in 1995 - 3 staff – peripheral activity
– study skills support
- Expanded following the Governments 2003 Widening Participation agenda.
- 2009 - 8 academic staff + admin – central activity. Multi faceted but focussed on personal, professional and academic development of the individual.



Structure



Our Aim

**To support every student to achieve
their full potential,
regardless of educational experience
or route of access.**

Targeting potential students (to reflect our diverse community)

- **Student Ambassador Scheme**
- **Selection of appropriate programme**
- **Meeting entry requirements**
- **AP(E)L**



Preparing the Non Traditional Student

- **Preparing for Higher Education Programme**
- **Pre Adaptation Programme for Refugees and Migrant Health Care Professionals**
- **AP(E)L Module**



Academic Development

- **Drop In Surgeries**
(Numeracy, Non Native English Speakers, General Academic Skills)
- **One to One**
- **Small Group Tutorials**
- **Student Negotiated Workshops / Classes**
- **Tutor Requested Bespoke Classes**
- **Course Embedded Provision**
- **Personal Tutors**



Attrition Danger Points

- **Peer Assisted Student Support (PASS) Scheme**
- **Getting Back on Track Initiative**
- **Consolidation and Practice Period (CAP)**



Continuing Professional Development

- Professional Navigator
- AP(E)L
- Profiling modules
- Personal Development Planning
- Careers Advice
- Portfolio Building
- MSc and PhD Provision



Statistics

In the academic year 2007/2008, the faculty enrolled 5860 students



Type of provision	Number of students
APEL Claims	166
Professional Navigator contacts	191
AP(E)L Module	26
Profiling Modules	14
Preparing for Higher Education	20
Pre-adaptation Programme	20
English language drop-in / tutorials	62
Academic Skills Development workshops	3300 (approx)
Academic Skills Development – individual tutorials	517
Lunchtime drop-in surgeries	202
CaP workshops	270
Numeracy workshops	3773
Numeracy tutorials	1162
Numeracy moodle site	1722
Grand Total	11445



Challenges

1. Time
2. Staff numbers
3. Getting everyone on board



Future Developments

Longitudinal evaluation of service.

Increase responsiveness to observed and expressed needs by both students and staff.

Maximise use of technology to increase access to academic development support.

Continue to work collaboratively with students, university staff and trust colleagues.



References

Bowl M (2003) *Non-Traditional Entrants to Higher Education*, United Kingdom: Trentham.

House of Commons Public Accounts Committee (2009) *Widening Participation in Higher Education*, London: The Stationery Office.

National Audit Office (2007) *Staying the Course: The Retention of Students in Higher Education*, London: The Stationery Office.