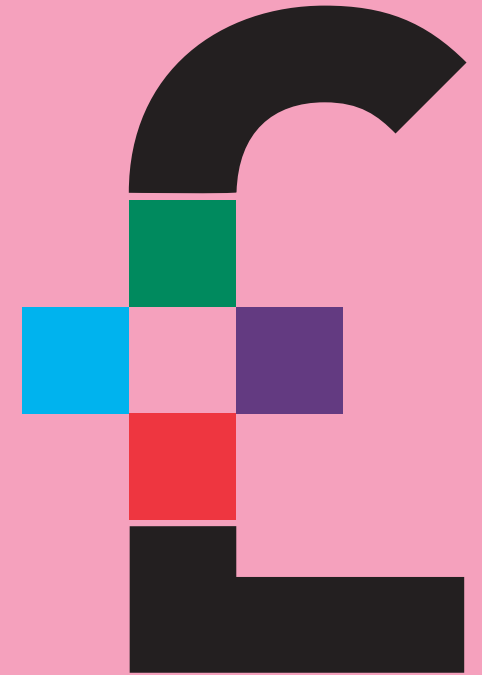


Edge Hill University,
St Helens Road, Ormskirk,
Lancashire L39 4QP



Edge Hill University
STUDENT SERVICES



A MONEY DOCTORS GUIDE

for Continuing Professional Development (CPD)
students in the Faculty of Health



The Frank Buttle Trust

EDGEHILL.AC.UK/FEES
IT'S ABOUT CHOICE

 **Money Doctors**
Edge Hill University Student Services

FUNDING

Faculty of Health CPD students may receive funding from one or more of the following sources:

- Their employer
- Educational Trusts and Charities
- Student Finance England
- Professional and Career Development Loan (PCDL)
- Access To Learning Fund

Employer

Each organisation has its own funding procedures and arrangements for employees who wish to undertake Continuing Professional Development.

For more information contact your HR department.

Educational Trusts and Directories

If your employer can't help with funding there are educational trusts and charities, which you can apply to for help, these are listed in the *Educational Grants Directory* and *Charities Digest*, which are available from the reference section of any library.

Alternatively you can contact

**The Educational Grants
Advisory Services (EGAS)
501-505 Kingsland Road
London
E8 4AU**

Tel: 020 7241 7459

Another website which may be useful for searching for other sources of funding is:-
www.studentcashpoint.co.uk

Student Finance England (SFE)

Fee Grant and Course Grant

Part-time undergraduate Faculty of Health CPD students (ie, qualified nurses studying BSc Nursing) may apply to Student Finance England for some financial assistance towards tuition fees and course costs, subject to satisfying certain criteria.

- You must be studying at least 50% of a full-time equivalent course, ie at least 60 credits.
- The course must lead to a Higher Education qualification.
- The course must be of at least one academic year's duration and must not exceed twice the period normally required to complete a full-time course leading to the same qualification.
- The level of your household income.

For further information and an application form (PTG1), visit

www.direct.gov.uk/studentfinance.

Tel: 0845 300 5090

Professional and Career Development Loans (PCDLs)

A Professional and Career Development Loan is a bank loan you can use to help pay for work related learning. It can be used to pay for course fees, books, childcare, travel and living expenses such as rent or food. You can borrow between £300 and £10,000 from a participating bank to help support your course.

For more information and advice about PCDLs or to order an application pack call the PCDL helpline on **0800 585 505** or visit **www.direct.gov.uk/pcdl**.

Access to Learning Fund

The Access to Learning Fund can provide extra help if you're in financial hardship. The Access to Learning Fund is available to full-time and part time higher education students. Part time undergraduate and postgraduate students can qualify, as long as their course lasts at least one year and takes no more than twice as long to complete as an equivalent full time course.

You can pick up an application form from the Student Information Centre or download one from **edgehill.ac.uk**. You'll be expected to have applied for any funding you are entitled to before applying for help from the Access to Learning Fund.

ACCOMMODATION

We provide a list of private rented accommodation in the Liverpool, Southport and Ormskirk areas, mediation advice between landlord and tenant, information and guidance relating to contractual arrangements between landlord and tenant. We can be contacted on: **01695 584200/584289/584786** or by e-mailing **accommodationteam@edgehill.ac.uk**

FINANCE

We offer finance and welfare rights advice on issues such as funding, housing benefit, tax credits and the Access To Learning Fund. For further information contact the Student Financial Support Team on: **01695 584452** or by e-mail **financialadviceteam@edgehill.ac.uk**

INCLUSIVE SERVICES

“Working with you”

Based in the Student Information Centre (SIC) and the University Library, we provide information, guidance and support to students, including those with physical or sensory impairments, mental health issues, health conditions, Scotopic Sensitivity, Specific Learning Difficulties (e.g. dyslexia) and autism. We will guide students through the assessment process if they feel they may have a Specific Learning Difficulty such as dyslexia. We provide resources and study support for academic writing and ICT and information skills. We can also support you in applying for Disabled Students Allowance (DSA) and our support workers and advisers, funded via DSA, can provide a range of study and/or personal support, based on your individual learning requirements.

Our approach is friendly yet professional and you can discuss your requirements with us in complete confidence. Our ultimate aim is to empower you through our accessible and inclusive services.

Contacts:

For SpLD (dyslexia), scotopic sensitivity and academic skills and ICT:
University Library (1st Floor), Ormskirk
T: **01695 584372**
E: **inclusiveservices@edgehill.ac.uk**

For physical and sensory impairments, mental health issues and autism:
Student Information Centre (SIC), Ormskirk
T: **01695 584190**
E: **inclusiveservices@edgehill.ac.uk**

LEARNING SERVICES

Learning Services' key purpose is to support learning and to develop a responsive learning environment for all, through services and facilities, research and development, information and support.

Learning Services provide Edge Hill students and staff with access to a range of electronic resources including over 15,000 electronic journals, over 55,000 electronic books, electronic newspapers and online databases. Most of these resources can be accessed over the Internet from outside Edge Hill with your single Edge Hill username and password. If you are a member of staff you will need to login using your library number and pin.

Useful Learning Services contacts:

The Library and Information Resource Centre (LIRC), Clinical Sciences Centre for Research and Education, University Hospital, Aintree

Opening hours:
Monday to Thursday 08.30 - 20.00
Friday 08.30 - 17.00
Saturday 10.00 - 14.00

Helpdesk: **0151 529 5851**

University Library, Ormskirk

Opening hours:
Monday to Friday 08.30 - 21.00
Saturday and Sunday 11.00 - 18.00

Helpdesk: **01695 584286**

COUNSELLING SERVICE

Counselling for students is available on the Ormskirk site, at the Health Centre situated in the Wilson Centre. Students can self refer at any time.

The Counselling Service offers a range of services including one-to-one counselling, workshops and support groups addressing a range of issues such as;

- learning to relax
- confidence building
- overcoming procrastination

These groups are advertised throughout the year and are open to all students.

We also have a range of information and resources available electronically on the counselling web pages and through our dedicated Blackboard site. This includes self-help information and links to internal and external sites that may provide further support. In addition, a downloadable recording of simple relaxation techniques is available to play or download from our web pages to help with stress and to improve sleeping patterns.

Further information about the Service, including the confidentiality policy, is available on the website. If you have any suggestions, complaints or compliments relating to any aspect of the Service please do not hesitate to contact us. Appointments are normally offered within one to two weeks. However if it is an emergency we will offer you an appointment either the same or next working day. The service operates from 9.00 – 17.00 each day and until 19.00 one evening per week.

Contact details:

T: **01695 584484**
E: **counselling@edgehill.ac.uk**
W: **edgehill.ac.uk/counselling**

