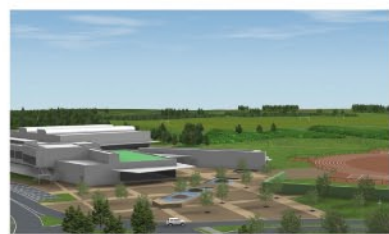




Proposed Sports Development: Development Phasing



The University acknowledges that this project is a major undertaking and will need to be managed efficiently to minimise local impact from the construction phase of the development.

A specialist team of consultants is helping the University to ensure that the design is developed in a way that will maximise its cost effectiveness while at the same time, delivering a sustainable answer through a process which limits environmental impact.



Artist's impressions and design begin the process of change which will ultimately lead to the new facilities



The use of specialist machinery is essential for efficient progress – a tree spade in operation



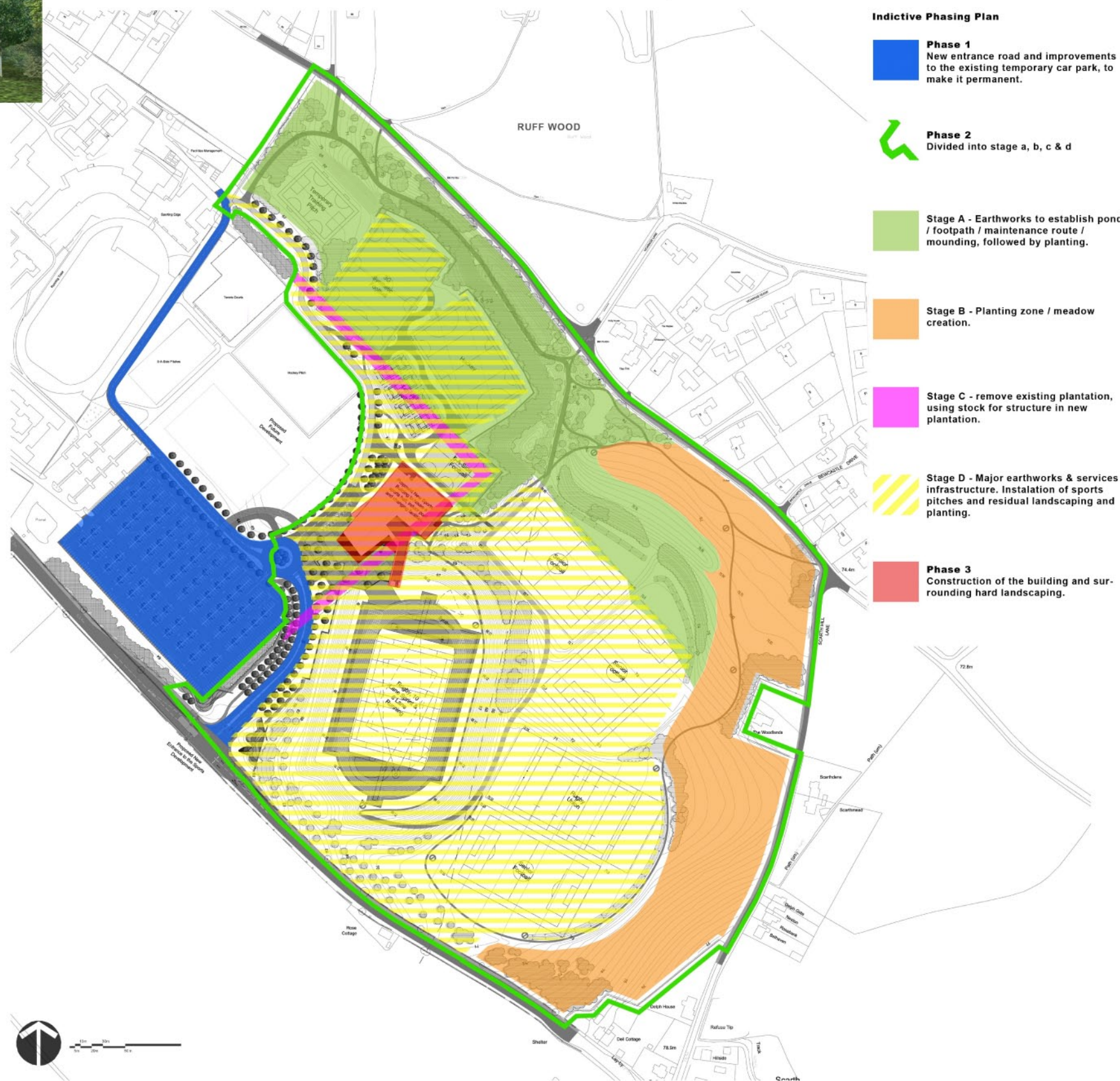
Major earthworks during construction of lake on western campus



Disruption and impact of works can be minimised if the contract is well managed



Installation of sand slits, for improved drainage, in a newly formed sports pitch



The construction programme would seek to achieve the following:

- Retain existing sports facilities during the construction phase
- Construct the new entrance road and implement the improvements to the existing temporary carpark to convert it to permanent
- Carry out major earthworks around the site perimeter as a fore runner to any building works so that the new landform will screen and minimise visual impact for those residents and travellers along Ruff Lane
- Defer clearance of existing trees until earthworks are completed and new homes for some of the plants can be defined
- Carry out a major programme of tree planting and meadow establishment so that these areas can begin to establish during the remaining construction period
- Incorporate sustainable materials and construction methods in the development of the project
- Complete the building programme in a sequence which will minimise disruption and bring the facilities into use together.



Was it all worthwhile? Recent photographs of the lake and buildings on the western campus, which has proved a big success with the university, students and visitor alike. There is every confidence that the new sports development can be as successful and play a major part in the future of the University, Ormskirk and West Lancashire.