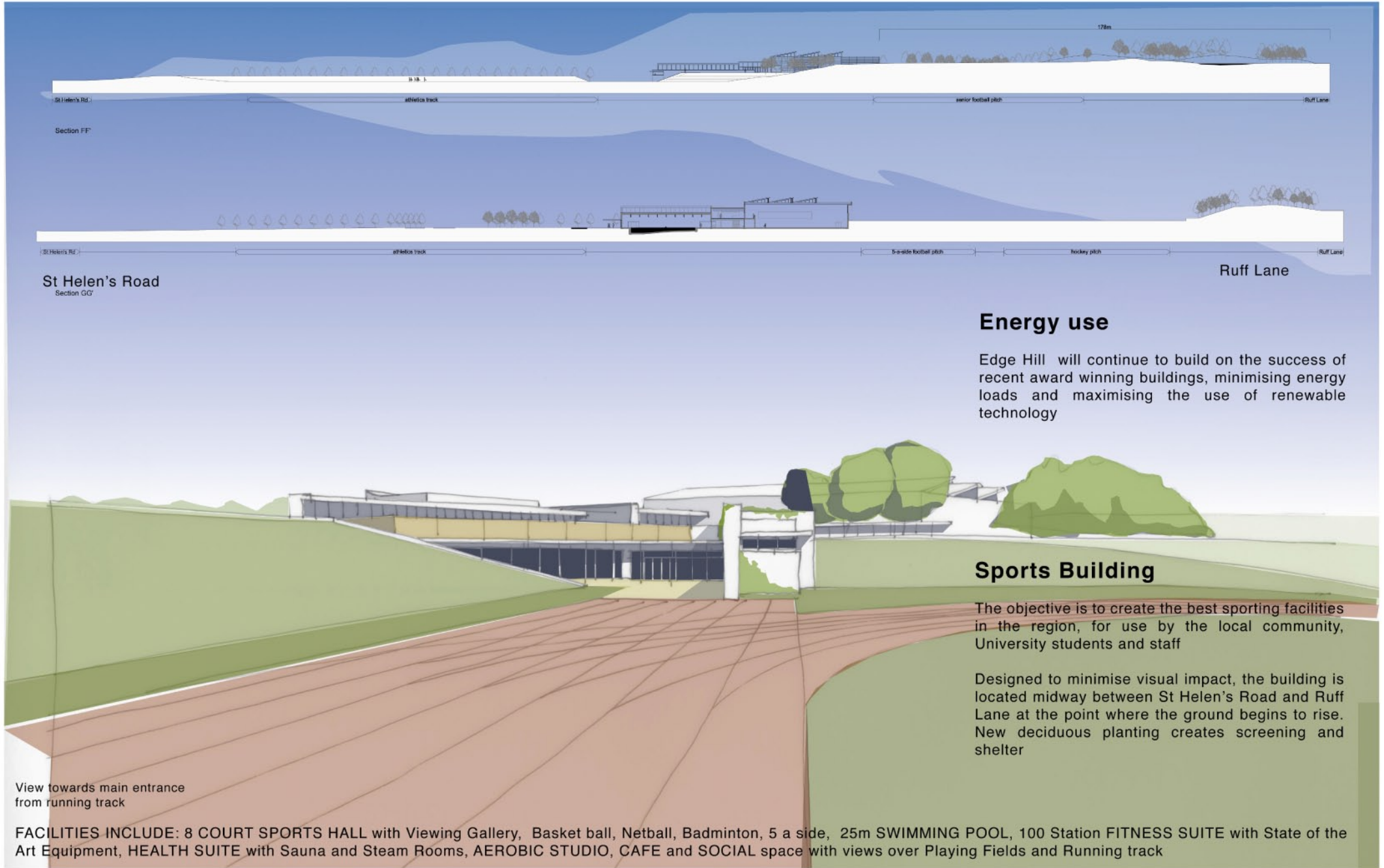




Proposed Sports Development: Building



Energy use

Edge Hill will continue to build on the success of recent award winning buildings, minimising energy loads and maximising the use of renewable technology

Sports Building

The objective is to create the best sporting facilities in the region, for use by the local community, University students and staff

Designed to minimise visual impact, the building is located midway between St Helen's Road and Ruff Lane at the point where the ground begins to rise. New deciduous planting creates screening and shelter

View towards main entrance from running track

FACILITIES INCLUDE: 8 COURT SPORTS HALL with Viewing Gallery, Basket ball, Netball, Badminton, 5 a side, 25m SWIMMING POOL, 100 Station FITNESS SUITE with State of the Art Equipment, HEALTH SUITE with Sauna and Steam Rooms, AEROBIC STUDIO, CAFE and SOCIAL space with views over Playing Fields and Running track



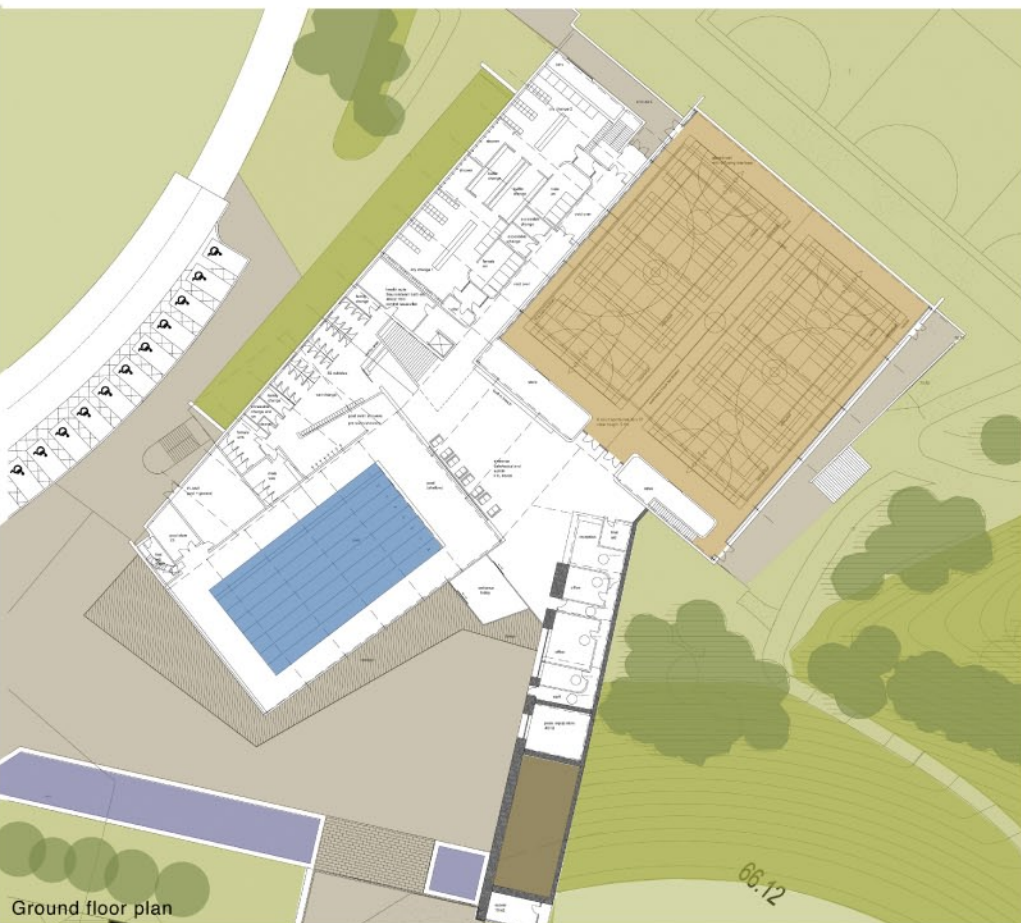
Swimming Pool



Aerobic Studio



Sports Hall



Ground floor plan



First floor plan